

Floating Manipulative Therapy 浮腰式腰痛治療器

protec



PROTEC was born in Japan and is the world's first vertical suspension/spinal decompression therapy system that allows for mobilization therapy while experiencing a significant reduction in internal intervertebral disc pressure.

Floating Manipulative Therapy, so called FMT, which is a gravity based therapeutic system and remarkable innovation in spinal decompression. The lower body weight, functioning as an anchor and rehabilitation can be conducted for the lumbar region.

The FMT was introduced at the August 2000 International Human Science Convention in San Diego by Prof. Hiroshi Jonai, MD, Ph.D. (Nihon University). Since then, it has gained wide medical recognition and use in Japan, Asia, USA and Europe. Over 1,800 machines are currently in use by general hospitals, orthopedic surgeons, internal medicine clinics, physical therapy and rehabilitation centers, osteopaths, chiropractors, acupuncturists, massage therapists, sports gyms and professional sport teams.

Floating Manipulative Therapy 浮腰式腰痛治療器

protec

PROTEC system is ideal for the treatment of back pain and can be used in conjunction with hip joint/pelvic exercise, Mackenzie's flexion and William's extension exercise.

PROTEC is a safe and natural way to eliminate the downward pressure of the upper torso from the lumbar region. As the spine becomes stretched through unloading and positioning, water, blood and nutrients return to the damaged areas.



PROTEC is a device that provides a safe, stress-free and comfortable treatment for patients. It is designed to allow a wide variety of mobilization therapy options, depending on the physician's treatment preferences. In a survey of doctors currently using the PROTEC Floating Manipulation Therapy, 93% of respondents verified its effectiveness. Typical therapy protocol includes: 10-15 minutes of gravity traction and another 10-15 minutes of stretching and therapy.

重力除去療法



牽引療法



The PROTEC Floating Manipulation Therapy System

PROTEC therapy enables a reduction of pressure upon the patient's lower body by lifting and suspending the upper body, thus providing a significant reduction in internal intervertebral disk pressure.

股關節開排運動



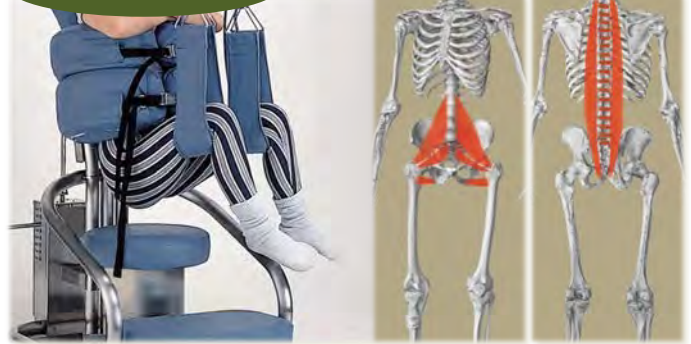
股關節屈伸運動



Hamstring伸長



腰椎骨盤回旋運動

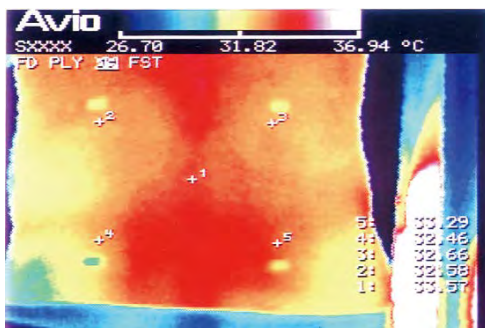


The PROTEC device is designed to allow a wide variety of mobilization therapy options, depending on the physician's treatment preferences. This is the world's first system that allows for:

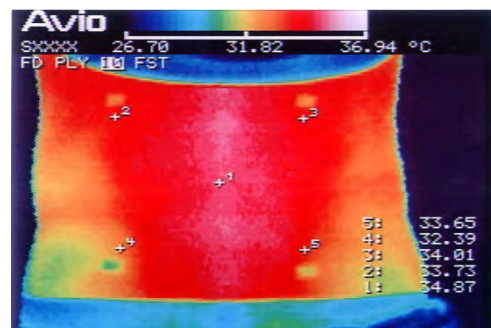
- Flexion/Extension Mobilization
- Lumbar Rotation
- Therapeutic Stretching Exercise
- Passive Motion

Floating lumbar suspension along with proper stretching techniques provides therapy that works equally well upon both superficial and deeper muscle groups, resulting in a significant reduction in muscular tension, and contributing to an improvement in blood flow and circulation.

Temperature measurement by Thermography after 15 minutes, just decompressed in Protect without therapy



Before

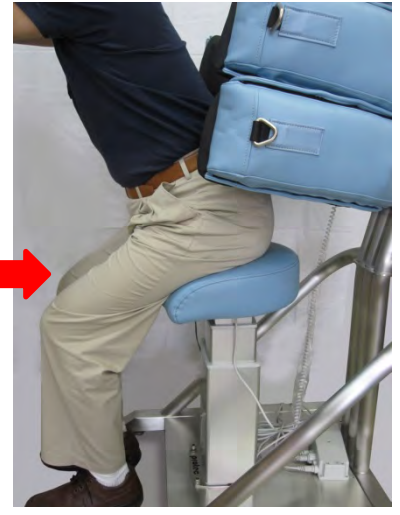


After



Various types of movement therapy and rehabilitation can be conducted for the treatment of the lumbar region, legs, neck, etc. Please learn by FMT protocol.

Seating/Standing up support system - gently support to patients with acute backache.



PROTEC Machine Size

- Footprint : 80 x 60 cm
- Weight : 83 kg w/o accessory
- Height : 200 cm
- Work space : 200 x 130 cm

Acceptable Patients

- Weight : up to 200 kg
- Height : up to 220 cm

Approved by : FDA, CE, HAS, KFDA, TFDA, MHLW etc.

Local Distributor

MEDICA

Manufactured by

Medica Co., Ltd.

6-28-5 Minami-Nagareyama, Nagareyama
Chiba 270-0163, Japan
Tel.+81-47-158-5421 Fax.+81-47-158-5439

MedLume
Scientific

International Distributor

MedLume Scientific Co., Ltd.

13 Fl., No. 193, Jian-8th Rd., Chung-Ho Dist.
New Taipei City 23585, Taiwan R.O.C.
Tel : 886-2-8221-2622 Fax : 886-2-8221-3722
<http://www.medlume-scientific.com>